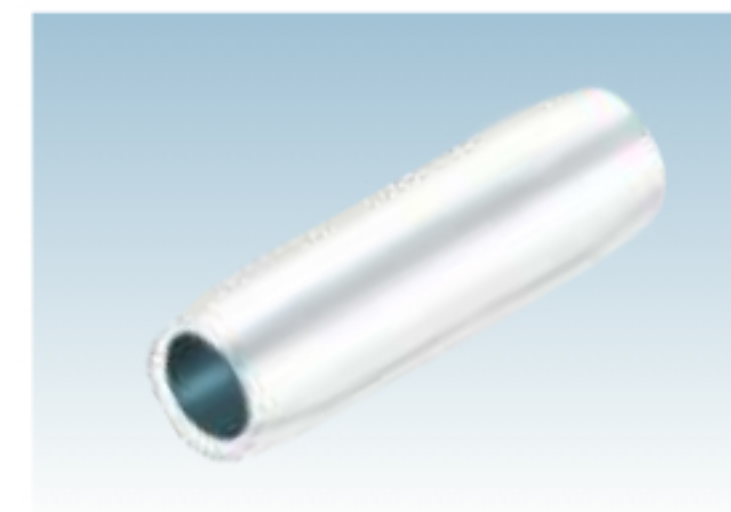
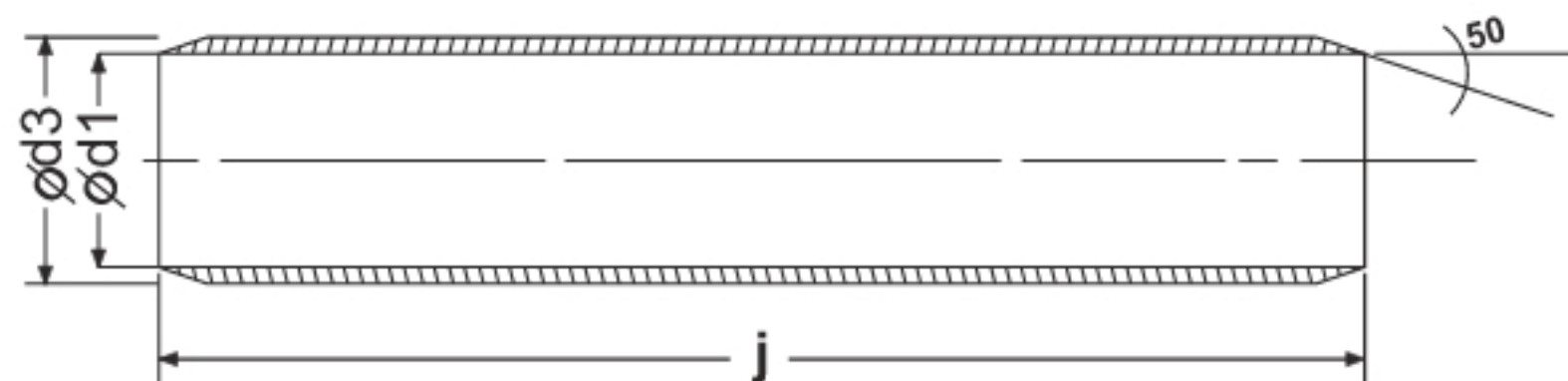


COMET ALUMINIUM FERRULES FOR AL- XLPE CONDUCTORS



Size mm ²	Ød1	Ød3	j	COMET CAT NO.
25	7.2	9.6	82	CALS-XL1
35	8.3	11.1	90	CALS-XL2
50	10.1	13.5	100	CALS-XL3
70	10.2	14.5	104	CALS-XL4
95	12.0	16.9	108	CALS-XL5
120	13.7	19.0	112	CALS-XL6
150	15.1	21.1	116	CALS-XL7
185	16.6	23.9	128	CALS-XL8
225	18.6	26.1	136	CALS-XL9
240	19.3	27.2	148	CALS-XL10
300	21.8	30.2	160	CALS-XL11
400	25.0	34.8	182	CALS-XL12
500	28.2	39.1	190	CALS-XL13
630	31.7	44.4	200	CALS-XL14
800	35.7	49.5	225	CALS-XL15
1000	41.0	56.0	250	CALS-XL16

MATERIAL : ALUMINIUM IS - 5082

FINISH : NATURAL